

Stuck with a sticky situation? We've got it covered.

In busy shopping centres, unsightly, dried chewing gum can quickly build up on your entrance matting. Not only does this look unpleasant, it can also damage the reputation of your shopping centre. Replacing large areas of matting can be both expensive and disruptive to customers, but luckily Syncros has the answer.

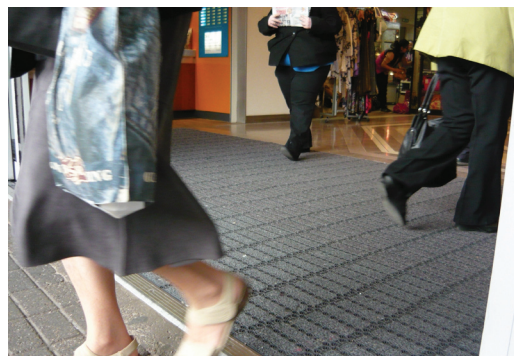


Milliken Obex® Forma™ tiles are manufactured in modules allowing any size or shape of mat-well to be fitted with the minimum of waste. Damaged sections of Milliken Forma can be replaced by changing only the individual tiles and not the complete unit as with other systems. In addition it is extremely durable and in the various colours available is excellent at concealing and retaining dirt and moisture whilst complimenting the interior design. The tiles have excellent wash and light fastness properties allowing conventional carpet maintenance systems to be used for cleaning and has a 5-year guarantee.

The Milliken Obex® family of products has just expanded to include the all new Obex® Tergo™. Finally, a versatile solution to external or internal anti-slip entrance matting which can be combined in perfect harmony with Milliken's Obex® Prior™ or Obex® Forma™ product ranges. The sheer number of design combinations using the three products creates almost limitless options and budget considerations. Originally designed as an external scraper for all weathers, the Obex Tergo tile is just as comfortable internally creating

the ultimate in soil removal linked with the Obex Forma for maximum moisture absorbance, making it the perfect option for busy shopping centres.

With 7 million visitors a year, the West Orchards Shopping Centre in Coventry needed an entrance matting solution they could rely on.



to support our home economy and buy British."

Obex®, the ultimate modular matting system for entrances and circulation areas in shopping centres consists of 4 coordinated products:

Prior™: a modular tile working as a primary scraper

Forma™: modular tile matting which scrapes and absorbs dirt and moisture, with superior performance provided by the unique and patented Obex® textile construction.

Tergo™: the latest addition to the Obex® tile family, with textile scraper inserts for ultimate efficiency in combination with Prior™ and Forma™.

Atrium Plus™: textile matting solution for long runners and wall to wall installations.

Syncros has worked with the Obex® product line since its inception, and has played a key role in the development of the product. They are the largest Obex® distributor in Europe, and have installed the entrance matting system in over 100 shopping centres.

Andy Talbot, Centre Director, commented, "Our operations team selected an interlocking solution from Syncros, combining both the Forma and the new Tergo tiles, to give us future flexibility. When you invest in a traditional matting system you don't have the ability to change areas of damage or wear. That's the beauty of this system. If a piece of stubborn chewing gum won't come off the matting, our maintenance team can simply pop out the offending section and renew it."

The Obex Tergo interchangeable matting system also allows tiles to be moved around and rearranged to ensure all areas of the installation receive equal wear, so increasing the lifespan of the installation.

"The icing on the cake for me was to find that it was manufactured in the UK. It is really important for British business



For further details, contact Syncros on 01234 314314 or email sales@syncros.co.uk www.syncros.co.uk

